



Q&A

Alan German & Chris Taylor
Ottawa PC Users' Group

Follow-up

Disk Alphabet Soup

- MBR, GPT and GUID
- FAT, exFAT and NTFS



Disk Partitioning (1)

MBR (Master Boot Record

- An older (DOS) disk partitioning scheme
- Still widely used
- Limited to 2 TB
- Supports 4 primary partitions
- Can use extended/logical partitions
(e.g. 3 primary and 1 extended with
multiple logical partitions)

Disk Partitioning (2)

GPT (GUID Partition Table)

- Newer partitioning scheme
- Each partition has a Globally Unique Identifier (GUID)
- Size limits determined by OS and filesystem
- Windows supports 128 partitions per disk, each being up to 256 TB (9.4 ZB raw limit)
- More robust (multiple copies of partition and boot records)

File Systems (1)

FAT32 (File Allocation Table)

- FAT32 replacement for FAT16 (DOS)
- Standard (e.g. external flash drives)
- More efficient storage, long file names
- “Limited” to 4 GB files (can be a problem with disk images) and 2 TB partitions
- exFAT (extended) raises storage limits
- Compatibility (e.g. Linux)

File Systems (2)

NTFS (New Technology File System)


- Standard Windows OS since NT in 1993
- Supports larger file and disk sizes
(16 TB to 8 PB depending on cluster size)
- More secure (file permissions)
- More robust (change journal, error correction)
- Less transportable (sharing with other OS
but, for example, Linux “speaks” NTFS)

Follow-up

BrowserMetrics Eating Storage

LineageOS > issues > android > Issues > #2820

Closed

Opened 3 weeks ago by  woheller69



WebView produces a lot of garbage in cache

Apps using WebView (e.g.Jelly) are collecting a lot of garbage in their app_webview/BrowserMetrics directory, which never gets deleted. I just manually deleted several hundred MB in several apps. Installing AndroidSystemWebview Beta 87.0.4280.86 from Play Store solves the problem.

Same on osprey, probably a platform issue



Kevin Haggerty @haggertk · 2 days ago

This will be resolved by any builds dated 20201227 or later by:

https://review.lineageos.org/c/LineageOS/android_external_chromium-webview/+298862

Edited by Kevin Haggerty 2 days ago


Share

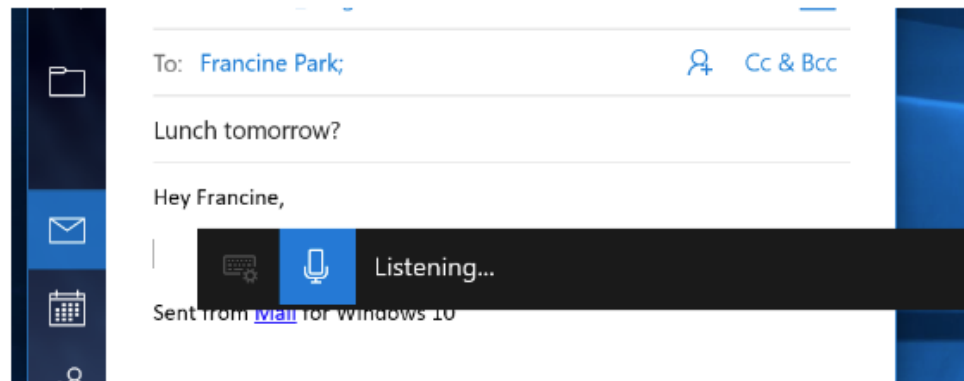
Dictation in Windows 10

Use dictation to talk instead of type on your PC

Windows 10

Use dictation to convert spoken words into text anywhere on your PC with Windows 10. Dictation uses speech recognition, which is built into Windows 10, so there's nothing you need to download and install to use it.

To start dictating, select a text field and press the **Windows logo key**  + **H** to open the dictation toolbar. Then say whatever's on your mind. To stop dictating at any time while you're dictating, say "Stop dictation."



<https://tinyurl.com/yafv2b7c>

The magic keyboard shortcut!



Dictated text

This text is being dictated in both Microsoft Word and Android's Writer Plus. A common point of discussion is the weather. This could involve either a bright sunny day or a cold winter snow storm.

Transcription in Writer Plus (Android)

This text is being dictated in both Microsoft word and Android's rate of plus. a common point of discussion is the weather. This could involve either a bright sunny day or a cold winter snow storm.



Transcription in Microsoft Word

This text is being dictated in both Microsoft Word hand Android try to plus. Hey common point of discussion is the weather. this could involve I have a bright sunny day or a cold winter snow storm.



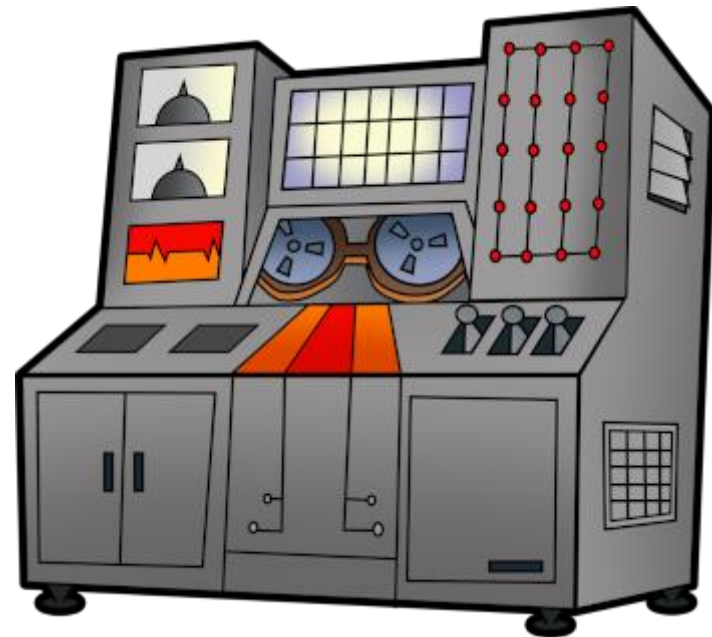
Listening...





Elder Video-conferencing

My Mom is 88 and has no experience with computers. I'm hoping to find a way that she can do video chats with relatives. Do you have any suggestions?



A Video-Conferencing Device

- Why not an Android tablet?
- Fairly-large screen
- Relatively inexpensive
- Easy to set up
- Simple to use
(Touch screen)
- It just works!

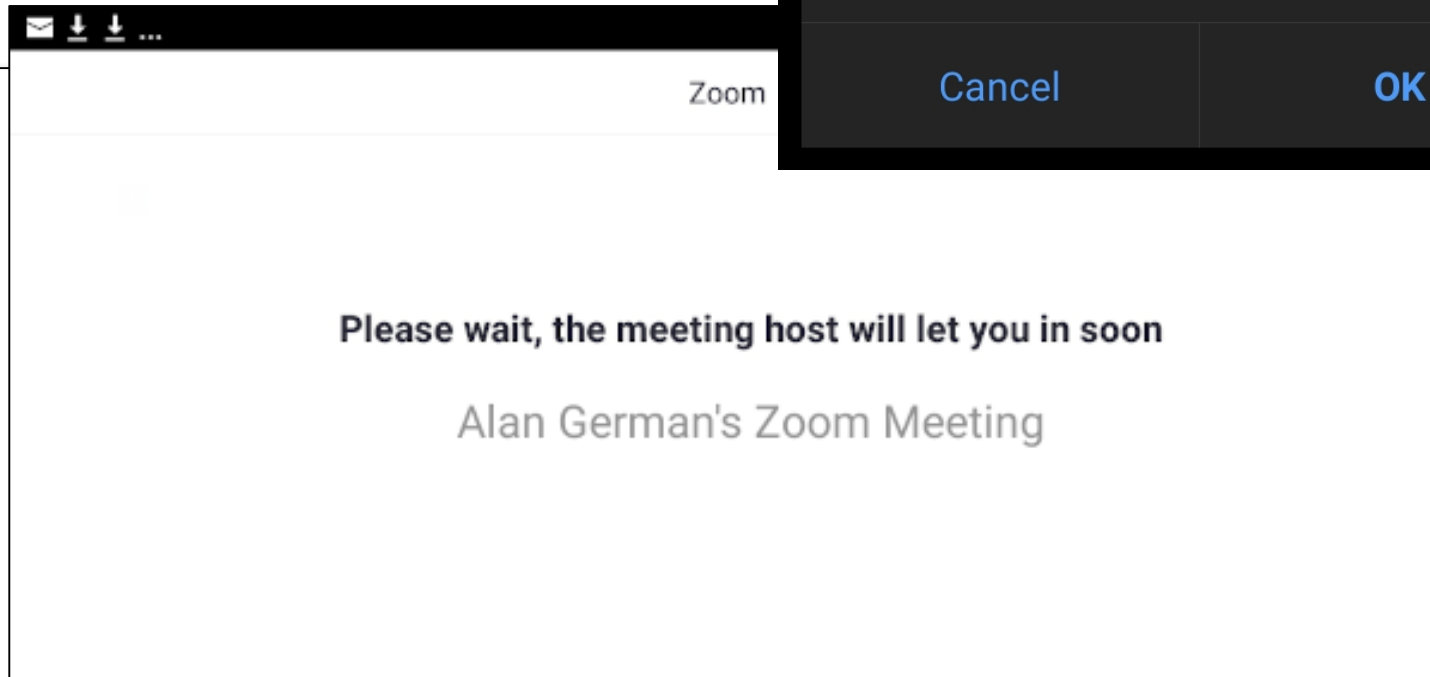
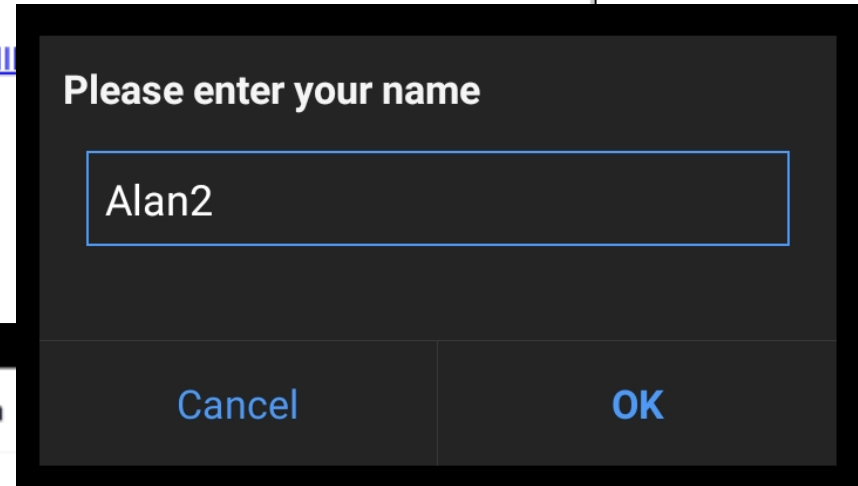
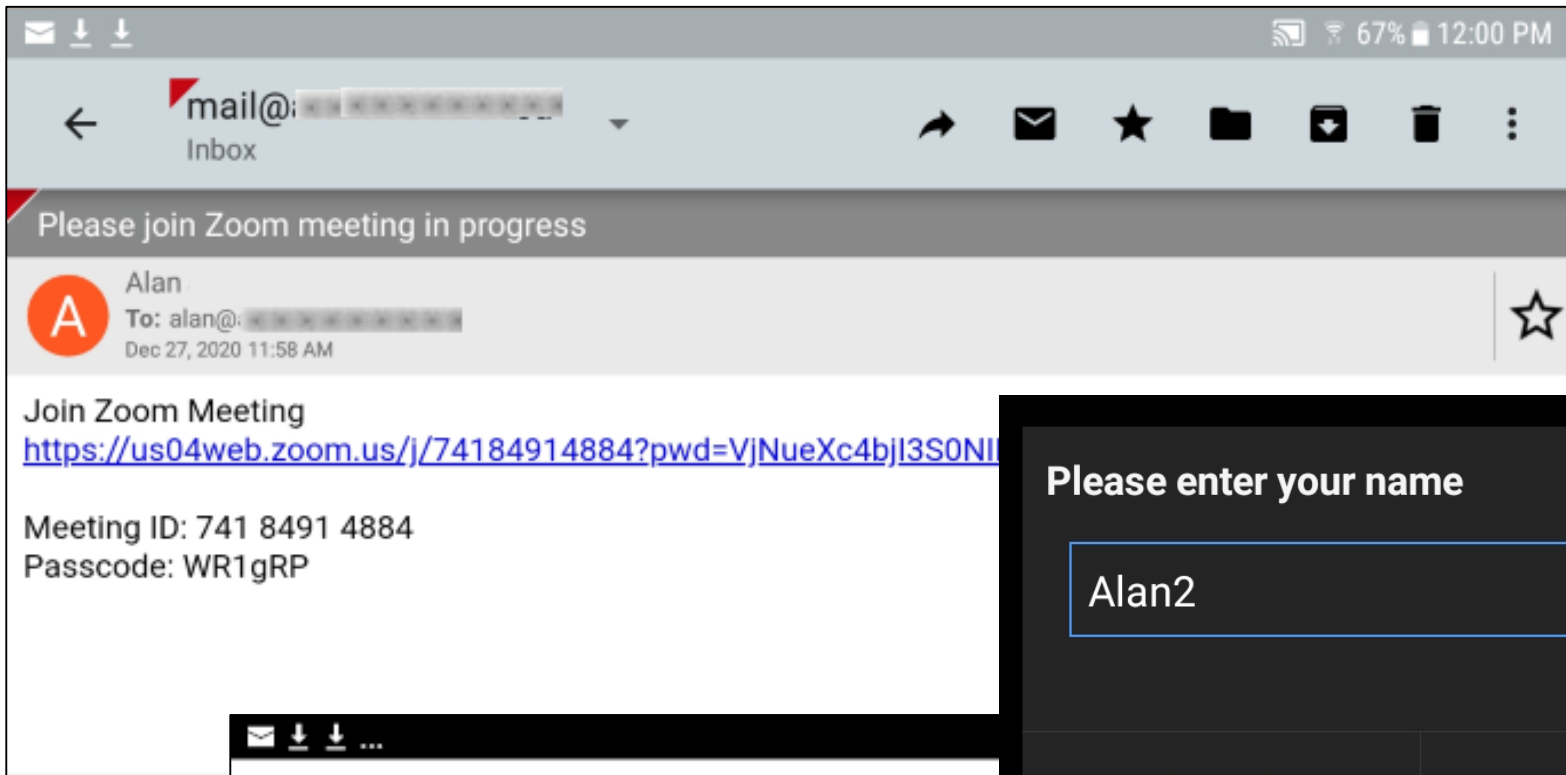


Connecting

Connection is simple:

- Install Zoom client from the Play Store
- Click on the link sent by E-mail
- Enter name
(Zoom remembers this for next time)
- Wait for host to admit you...
- Connected!





Word document content:

Connection is simple:

Install Zoom client from the Play Store

Click on the link sent by E-mail

Enter name

Wait for host to admit you...

Connected!

PowerPoint slide content:

Share Video-conferencing Device

- Why not an Android tablet?
- Fairly-large screen
- Relatively inexpensive
- It just works!



Click to add notes

Alan German's screen



Late-breaking addition

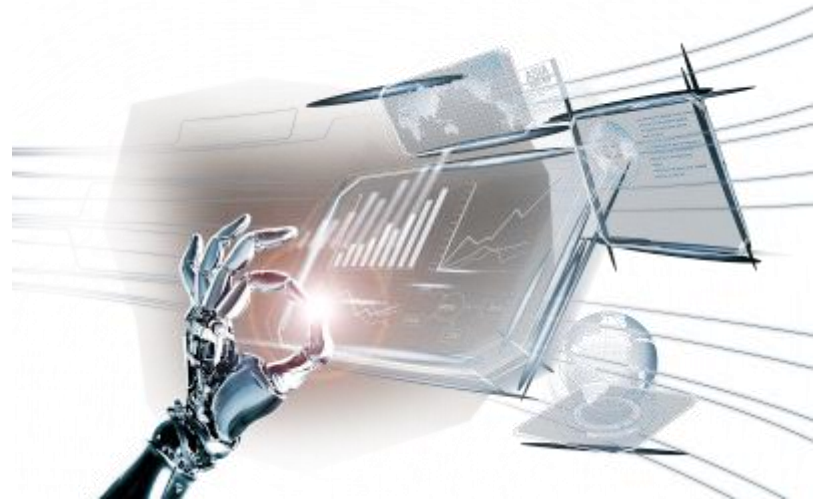
“I would need a device for which I could add a data plan”

- No small addition!
 - Mom has no Internet access
 - vast majority of devices are WiFi only
 - devices with cellular access are available
 - eg. Samsung Galaxy Tab E SM-T377W
 - bigger problem: operational cost
- Data requirement (Zoom)
 - 1.6 GB per hour
 - Let's assume 4 GB per month



Option 1: Device has cellular

- Rogers / Bell / TELUS
 - \$75/month for unlimited data
- Virgin Mobile / Koodo / Fido
 - \$45/month for 4 GB data
- Fizz / Public Mobile
 - \$40/month for 5 GB data



Option 2: Get “regular” Internet access

- Connect tablet or computer over WiFi
- NCF
 - \$36/month for 6 Mbps down / .8 Mbps up
 - \$42/month for 15 Mbps down / 10 Mbps up
- Fido / Storm / Teksavvy
 - \$64-\$69/month for 75 Mbps down / 10 Mbps up
- All unlimited bandwidth

Option 2 Best

- Unlimited bandwidth
 - about the same on-going cost as 4-5 GB cellular
 - don't need to limit to just video-conferencing
- Unlimited bandwidth available on cellular
 - at almost twice the ongoing monthly costs
- Easily use multiple devices
- Much wider choices for devices





Error - Camera Not Attached

- I'm getting an error message for the built-in camera on my Toshiba Tecra R-850 laptop: *camera not attached*.
- The camera does not even appear in the device manager
- I tried all the suggestions given by the troubleshooter but to no avail.



A Web-suggested fixes

- Windows - multiple fixes for the Camera App
- Settings - reset the Camera app
- Enable privacy setting to allow apps to use the webcam
- Update the webcam's driver
- Roll back a recent Windows update

<https://tinyurl.com/yc3hvz9u>

A

The ultimate solution?

TOSHIBA
Leading Innovation >>>

Canada

Worldwide Sites | Français

<http://support.toshiba.ca/support/>

HOME



TOSHIBA SUPPORT
Welcome to the TOSHIBA Technical Support site.

PLEASE SELECT YOUR PRODUCT BELOW

 LAPTOP	 DESKTOP	 TABLET	 LAPTOP ACCESSORIES	 STORAGE	 CAMERA
 TELEVISION	 BLU-RAY, HD-DVD DVD	 TV ACCESSORIES	 AUDIO	 MONITOR	 PROJECTOR



SecTeer Vulndetect - What's Happening?

- Replacement for Personal Software Inspector
 - launched spring 2018
 - beta designation removed 2020-08-20
 - blog indicates ongoing updates
 - not a lot of details
- What I like
 - free & seems to work
- What I don't like
 - have to manually check
 - would like automatic notification
 - don't want automatic update

A

Vulndetect results

The screenshot displays the SecTeer VulnDetect interface. The left sidebar contains 'Applications' and 'Configuration'. The main area shows a search bar and a table of detected applications. The table lists applications like FileZilla, Intel Extreme Tuning Utility, PuTTY, Total Commander, CCleaner, Firefox, and Foxit Reader, along with their versions and security status (Insecure or Ok). A detailed view for Intel Extreme Tuning Utility is expanded, showing the recommended version (7.0.1.4) and a link to the product homepage. Red callout boxes highlight key features: 'Shows a banner if newer version available' points to the top of the application list; 'Insecure apps at top' points to the top of the list; 'Download app update' points to the download icon; 'Expand for details' points to the expanded view; and 'Product website' points to the 'Open product homepage' link.

Application	Developer	Version	Status	Actions
FileZilla	FileZilla Project	3.46.0	Insecure	Download, Details
Intel Extreme Tuning Utility	Intel Corporation	6.4.1.8	Insecure	Download, Details
Recommended version: 7.0.1.4 Ok				
By: Intel Corporation				
Based on: C:\Program Files (x86)\Intel\Intel(R) Extreme Tuning Utility\XtuService.exe				
Open product homepage				
PuTTY	Simon Tatham	0.73	Insecure	Download, Details
Total Commander	Ghisler Software GmbH	8.52	Insecure	Download, Details
CCleaner	Piriform Ltd	5.75.0.8238	Ok	
Firefox	Mozilla Corporation	84.0.1	Ok	
Foxit Reader	Foxit Software Inc.	10.1.1.37576	Ok	

Shows a banner if newer version available

Insecure apps at top

Download app update

Expand for details

Product website



Vulndetect configuration

SecTeer VulnDetect - Personal chris.taylor@opcug.ca

Applications Configuration

Home / Configuration

Configuration

Last Agent IP Address	2607:fea8:c341:b100:8f6:7246:72fd:5e1e
Last CheckIn	a few seconds ago
Last Inspection	15 minutes ago
Next CheckIn	in an hour
Next Inspection	in a day
Host Name	CARINA
Days of week to run inspections	<input checked="" type="checkbox"/> Monday <input checked="" type="checkbox"/> Tuesday <input checked="" type="checkbox"/> Wednesday <input checked="" type="checkbox"/> Thursday <input checked="" type="checkbox"/> Friday <input checked="" type="checkbox"/> Saturday <input checked="" type="checkbox"/> Sunday
Hour of day to run inspections	08 : 00 <small>Inspections will run at this time each selected day</small>
Allow VulnDetect to update applications	<input type="checkbox"/>

Save Reset

Scans done once a day

I don't allow auto-updating



CD/DVD Autoplay

- Windows 10
- Set *Windows Media Player* as the default player
- Have to start the media player manually

A AutoPlay Default

- Action can be changed.
- However...
- Microsoft changed the defaults to "do nothing" in response to malicious content being found on some removable media.

Choose what to do with removable drives.



Configure this drive for backup
File History



Configure storage settings
Settings



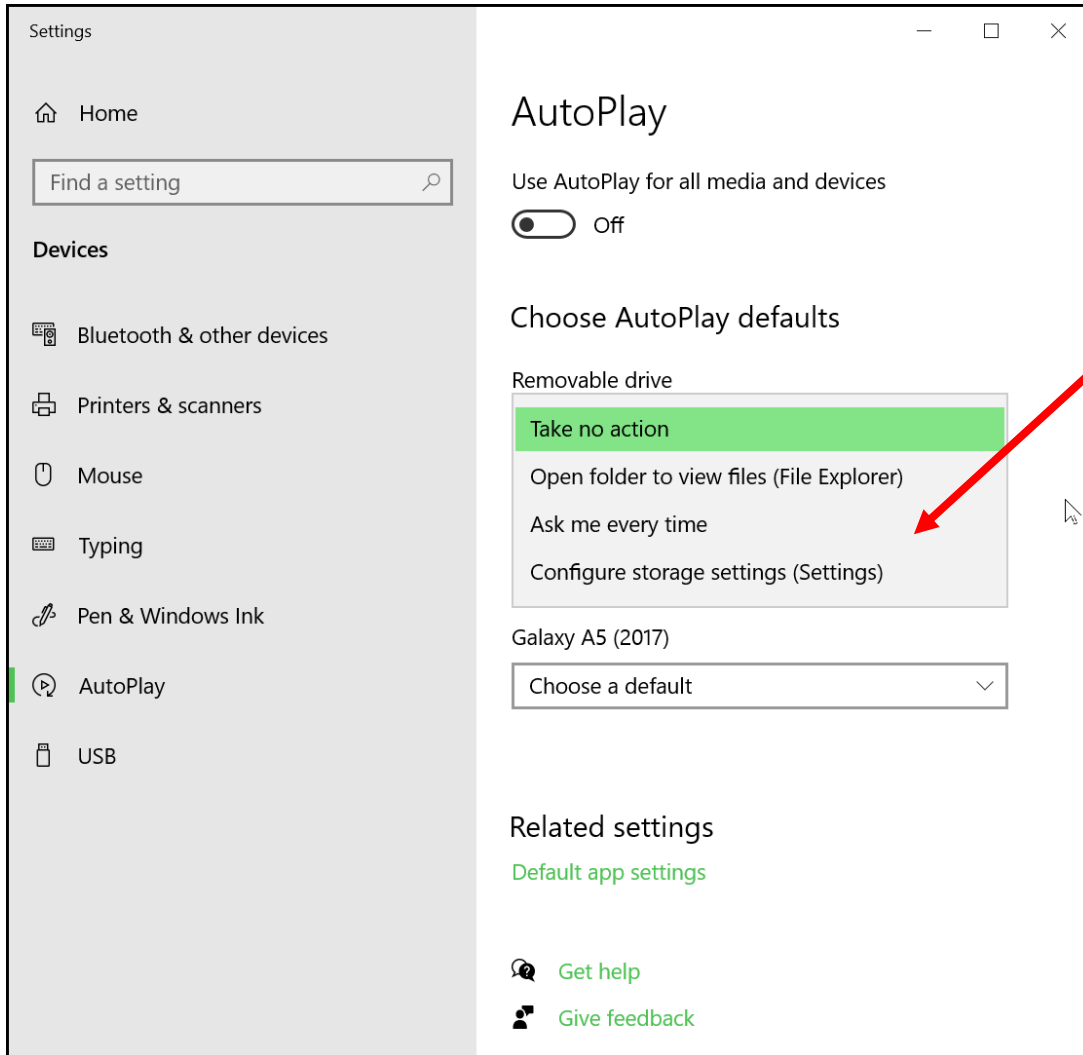
Open folder to view files
File Explorer



Take no action

A

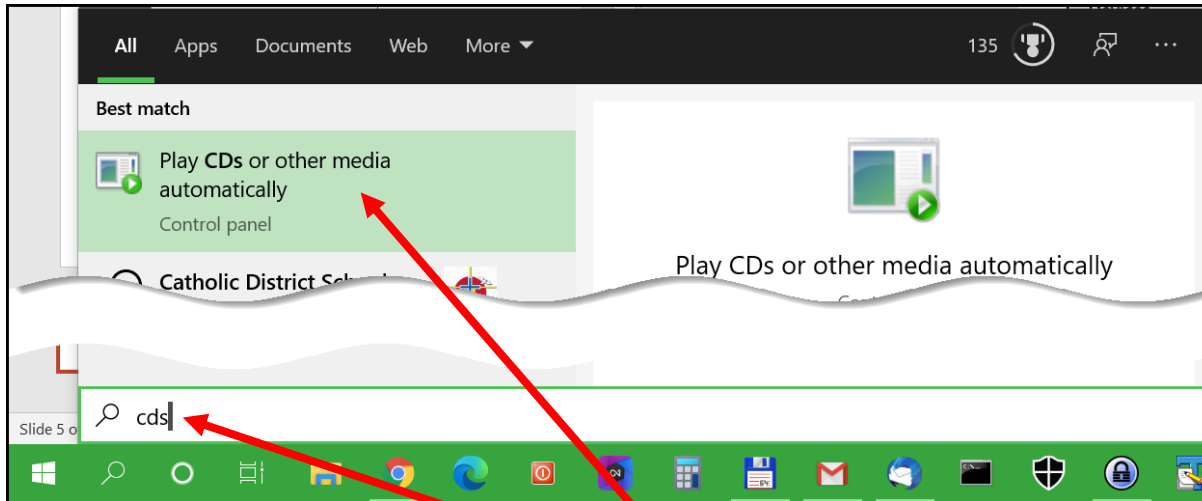
Optical disc AutoPlay



**Settings | Devices | AutoPlay
- no help!**

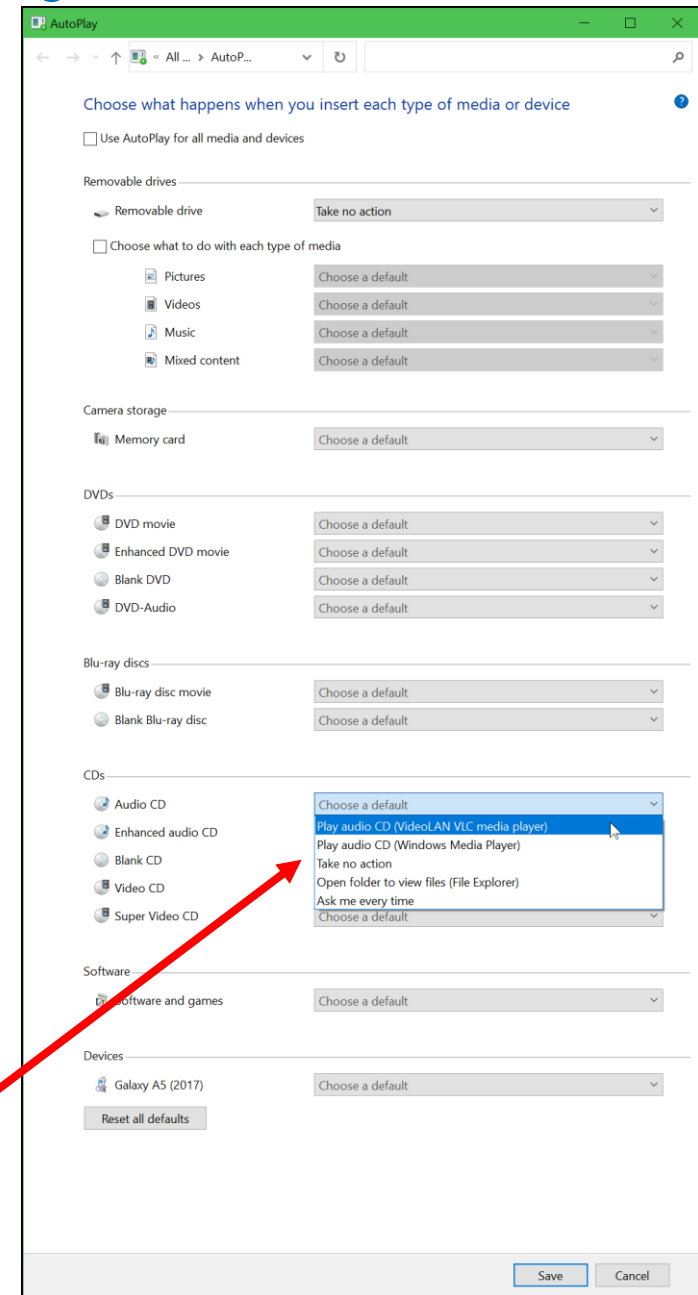
A

Optical disc auto-play



**Search for "cds"
- aha! Control Panel applet**

Autoplay options



Share

Google Play Store refunds

- We all love those free apps that make our smartphones sing and dance.
- Sometimes, those apps are even worth paying for. (gasp)
- Sometimes though, we just don't get what we want and, we want our money back.
- Here is help and links to official Google information on how to do just that.

<https://chromeunboxed.com/how-to-request-a-refund-on-the-google-play-store/>

Stewart Bruce



Windows Backup Fails

- For two consecutive weeks, I have had difficulty doing backups on Windows 10
- I get the error code
0x807800C5 - System Image Backup Error
- I also see the message:
The semaphore timeout period has expired
- The web suggests four or more “fixes” including a new reset point
- Generally after 4-5 tries, a complete backup results
- Any more suggestions?

A Time for a change?

- *I think - especially given the vast attention that Microsoft has given to continued development of a flexible, comprehensive backup solution - just about any of the free imaging solutions is the way to go.*
- Check out some options at:
Finding a Backup Program
<https://opcug.ca/Reviews/BackupPrograms.htm>



Internet Speed?

- Following Lawrence's excellent presentation on December 9th, we decided to purchase a TP-Link Wi-Fi range extender.
- Before installing, I thought it would be interesting to check the range of speeds throughout the house to see where the signal was weakest.
- I tried the speed tests provided through the Bell Home Hub 2000 and on fast.com.

- The Bell test results were amazingly consistent throughout the house, from when standing beside the router in the basement to being in several second floor rooms, with the download speed ranging from 91.50 to 91.52 mbps (uploads from 10.86 to 10.91).

Bell Home Hub 2000



- Fast.com produced far more variation and as expected, the worst speeds were in upper floors and when not vertically over the router location in the basement. Speeds ranged from 3.2 mbps in the worst case to 73 mbps (beside the router).



Which, if any, of these results should I have confidence in?

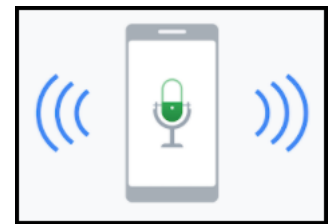
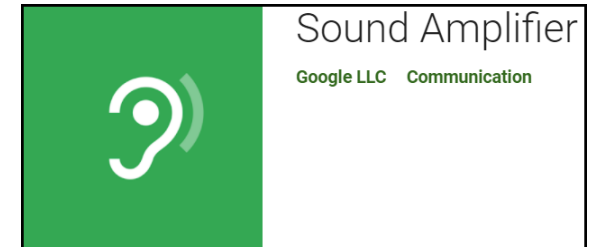
A Perhaps, another test altogether...

- I wonder if the speed test provided "through the Bell Home Hub 2000" is run from the router and reflects the best possible throughput - from the router to a server on the Bell network. (Nah - Bell wouldn't do that! - Would they?)
- I have decided to standardize on performance.cira.ca as I believe they have nothing to gain by fudging any numbers.

Share

Android app as hearing aid

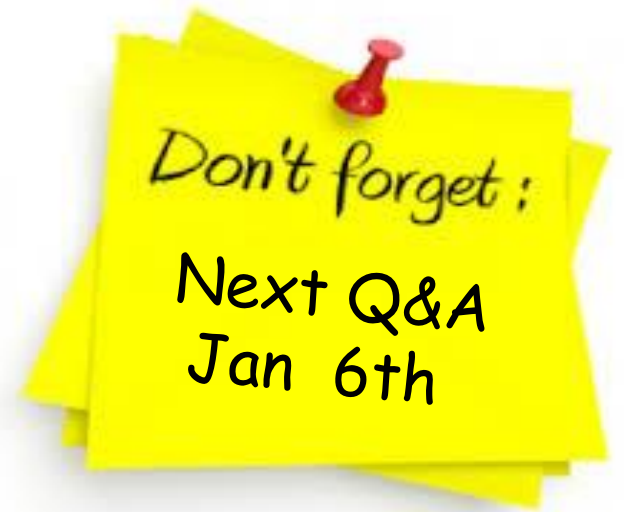
- **Sound Amplifier** from Google
 - play.google.com
 - search for sound amplifier
- Enhance audio from Android device
 - use any headphones
 - improve listening clarity
 - filter, augment & amplify sounds around you
 - reduce background noise
- Review on YouTube
 - <https://tinyurl.com/opcug-sa-review>



Stewart Bruce



**Any other:
Questions
Comments
Shares?**



**Send your questions,
answers, and topics
you wish to share to:**

SuggestionBox@opcug.ca



Your New Year's Resolutions:

- (1) I WILL backup my computer - tomorrow!
- (2) I will ask a question at Q&A (and find one that these guys can't answer!)
- (3) I will share my favourite program/app with the group



Happy
New Year!

